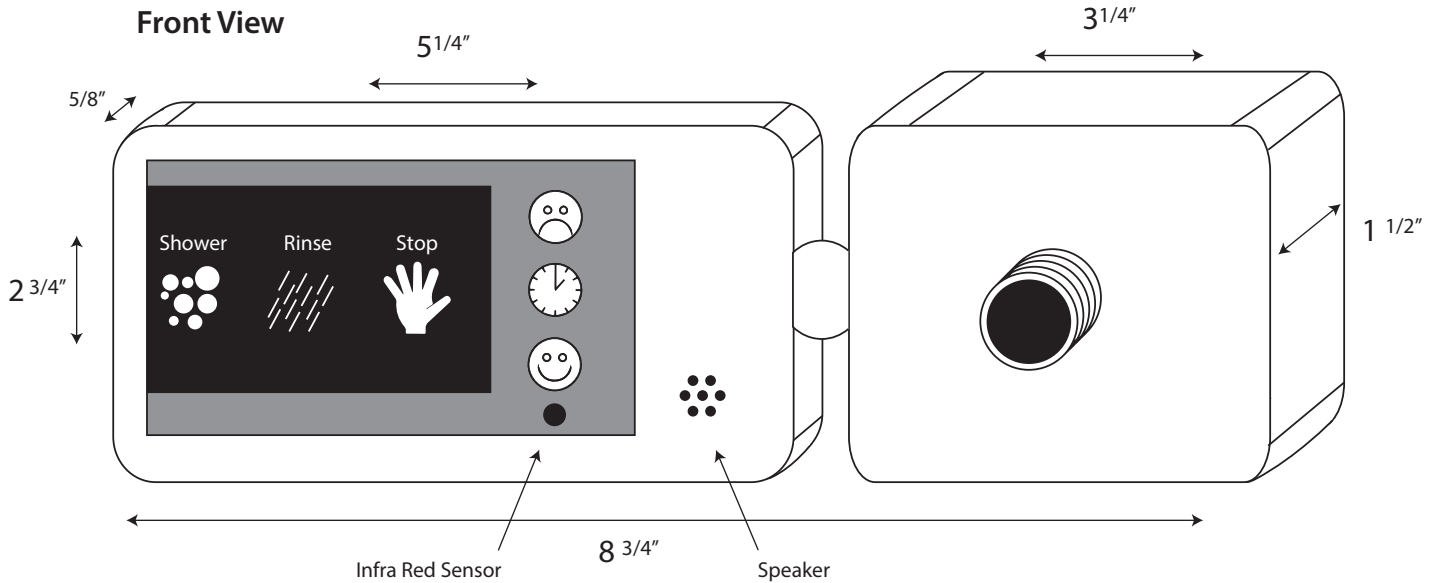




Display Unit

Power Unit



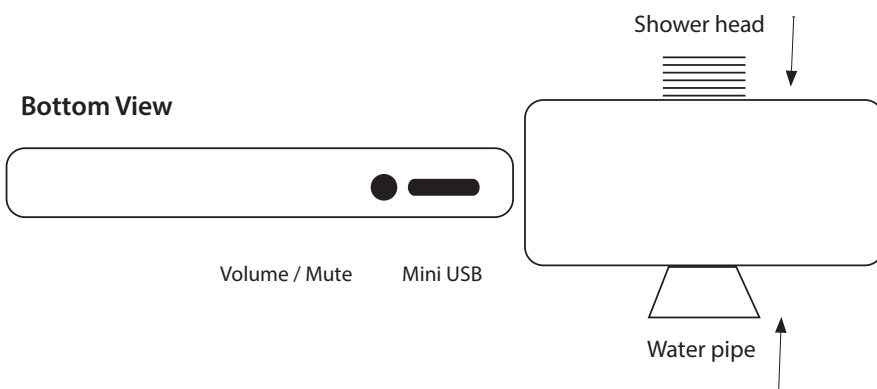
Infra Red Sensor: Enables programming via remote control.

Speaker: Waterproof. High volume.

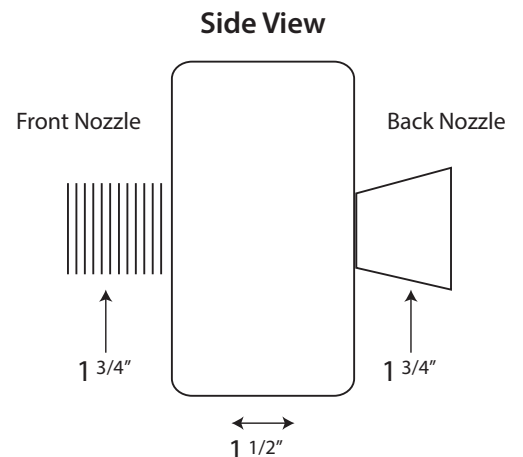
ABS Plastic: Combines strength, rigidity, hardness, gloss, toughness, electrical insulation properties, and protection from atmospheric humidity.

Polymer Lithium Ion Battery - 1050mA/h: Slim, extremely light weight. Constantly recharged by the internal mini-turbine motor.

Water Resistant: You can wash it off... but please don't submerge it.

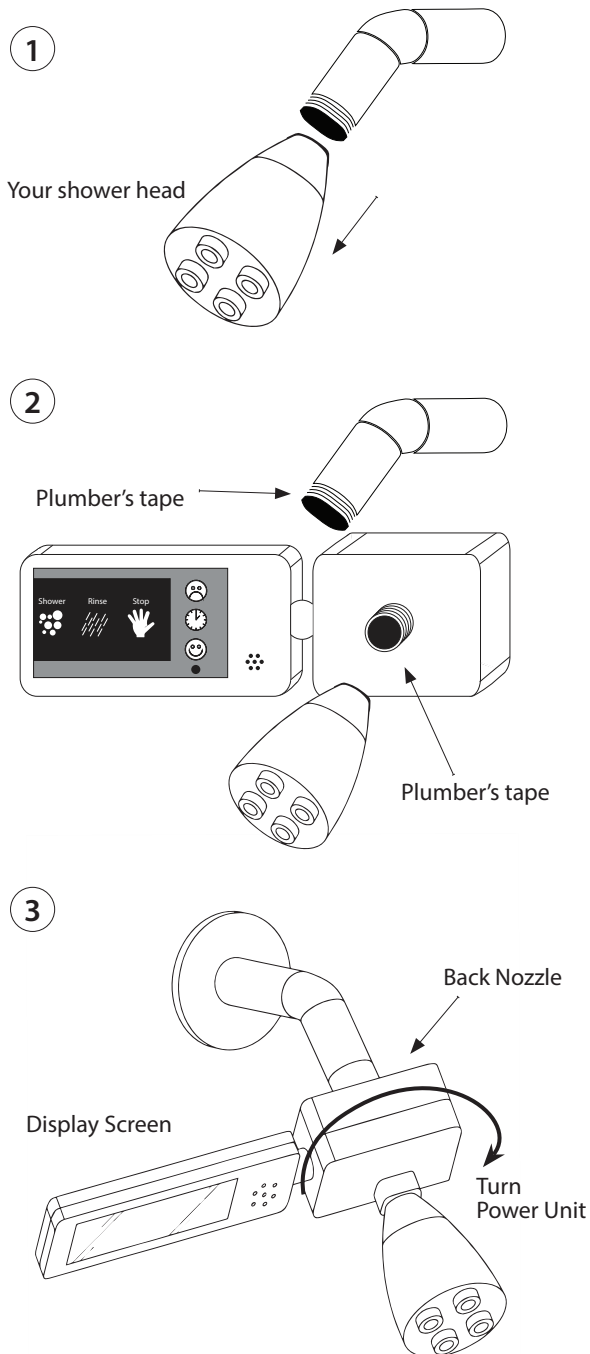


Volume Button: High/Medium/Low/Mute
Mini-USB Port: Water resistant. Connects to your computer to program sound effects and length of time. It will also charge the battery if needed.



Standard universal 3/4" pipe threading.

Installation Guide



Step 1

1. Remove existing shower head
2. Clean debris from inside pipe and shower head.
3. Clean water pipe threads.

Step 2

1. Wrap a strip of plumbers tape on the front nozzle.
2. Wrap a strip of plumbers tape on the water pipe.
3. Attach shower head to the front nozzle. Don't over tighten.
4. Slowly tighten iMShowerSmart onto waterpipe. Note: Turn by gripping the power unit not by the display unit.

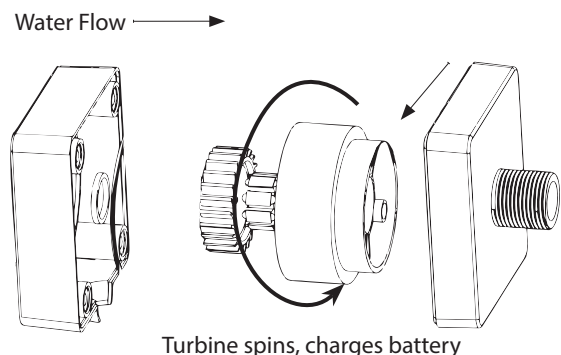
Step 3

1. Slowly tighten iMShowerSmart onto waterpipe. Note: Turn by gripping the power unit not by the display unit.

IMPORTANT: You want to install the iMShowerSmart so the display screen ends up facing you on the left of the shower head (see illustration). It will thread on and be snug and water tight. **DON'T OVER TIGHTEN**, or you risk breaking the back threads.

If it is hand tight, and the display screen is left of the shower head, that's good. Turn on the water and test it to make sure it doesn't leak. If it leaks, you: A) didn't use enough plumbers tape or B) gently tighten it one more revolution.

Mini-Hydro Turbine



Self Powered

The iMShowerSmart is completely self powered. Water flowing through the unit spins a mini internal power turbine, which generates the power needed to run the unit and keep it charged.

For best results: Use a 2.0 - 2.5 GPM (gallons per minute) shower head with minimum 45 psi of water pressure (typical household psi).

The unit can also be charged via the mini-usb port. It will run for 250 hours once fully charged, but as the mini-hydro turbine continually tops off the battery, you should never have to charge it again.